

# THE POSSESSION REPORT

POWERED BY PBiR

SCOUTING REPORT · UCONN — THREE-GAME TOURNAMENT SAMPLE

*Preparing to play UConn — every possession of their last three games, graded and read forward.*

## Dear Reader,

Thank you for opening The Possession Report. This one is a **scouting report** — built for someone getting ready to play UConn — and before you turn the page, let me tell you how to read it.

This is **not a box score**. A box score tells you **what happened**. A scouting report has to tell you what to **expect**. So we took UConn's last three games — Duke in the Elite Eight, Illinois in the Final Four, Michigan in the national championship — graded every possession of all three, and read the pattern forward.

We call the engine behind it **PBiR**. You won't find a formula in these pages — the math is ours. What we hand you are the **results**: who carries this team, which way they're trending, and where the crack in the armor opens.



### ADDS VALUE

The play, player, or unit moved the game forward.



### COSTS VALUE

It set the team back — a stop, a turnover, a miss.



### CERTIFIED 100%

All three games box-reconciled, gaps documented.

*The idea comes from a lifetime around the game: you don't scout what a team says it is — you scout what its possessions prove it is, night after night. Three games is a pattern. This report shows you the pattern.*

If anything doesn't make sense, that's on us, not you — reach out anytime. Thank you for your time, and for trusting us with it.

Sincerely,

**Herman Johnson Jr.**

Founder · The Possession Report, powered by PBiR

EXPANDED SCOUTING EDITION · COLLEGE FORMAT

# UConn Scouting Report

A SCOUTING REPORT ON UCONN — BUILT FROM EVERY POSSESSION OF THEIR LAST THREE GAMES, READ FORWARD FOR THE TEAM PREPARING TO PLAY THEM NEXT.

<p><b>ELITE EIGHT</b></p> <p><b>UConn 73–72 W</b></p> <p>UConn PBiR +99</p>	<p><b>FINAL FOUR</b></p> <p><b>UConn 71–62 W</b></p> <p>UConn PBiR +70</p>	<p><b>NATIONAL CHAMPIONSHIP</b></p> <p><b>UConn 63–69 L</b></p> <p>UConn PBiR +39</p>
---	--	---

Every play in all three games is logged and played back, and each action is graded across **15 universal basketball events** to produce the PBiR — the Playback Index Rating. **We don't make the facts. We report them.** The point values stay proprietary.

Made 3	Made 2	Made FT	Off. rebound	Def. rebound
Assist	Steal	Block	Drawn foul	Missed 3
Missed 2	Missed FT	Turnover	Defensive foul	Offensive foul

WHAT'S INSIDE — THE FOUR PARTS

<p><b>PART 1 · START HERE</b></p> <p><b>The Letter &amp; This Cover</b></p> <p>What a possession-graded scouting report is and how to read it.</p>	<p><b>PART 2 · PAGES 3–5</b></p> <p><b>The Scouting Summary</b></p> <p>The verdict on UConn in three pages: who carries them, which way they're trending, where the crack is.</p>	<p><b>PART 3 · PAGES 6–19</b></p> <p><b>The Deep Dive</b></p> <p>The tape, the trend, the engine room, the fouling crack, the shot profile, all three games — closed by Common Opponents, the Prescription, and the Anticipated read.</p>	<p><b>PART 4 · PAGES 20–26</b></p> <p><b>The Minute-by-Minute Record</b></p> <p>All 120 minutes of the sample graded green / red / yellow, one half at a time, reconciled game by game.</p>
--	---	---	---

HOW TO READ THE THERMOMETER

<p><b>GREEN</b></p> <p>UConn won the minute</p>	<p><b>RED</b></p> <p>UConn lost the minute</p>	<p><b>YELLOW</b></p> <p>Tied the minute</p>
---	--	---

**Scout the pattern, not the highlight.**

**Three games don't lie.**

**DON'T SCOUT THE GAME. SCOUT THE POSSESSIONS.**

**A plain word on the data:** all three games box-reconciled with zero mismatches. In the Duke feed, five assists confirmed by the official box (and a second source) carried no play-by-play timestamp; they are credited to the verified players in every total and noted on the minute-record pages. Rotation/lineup analysis is withheld — the college substitution feed does not meet PBiR certification.

PART 2 · THE SCOUTING SUMMARY

THE VERDICT IN THREE PAGES

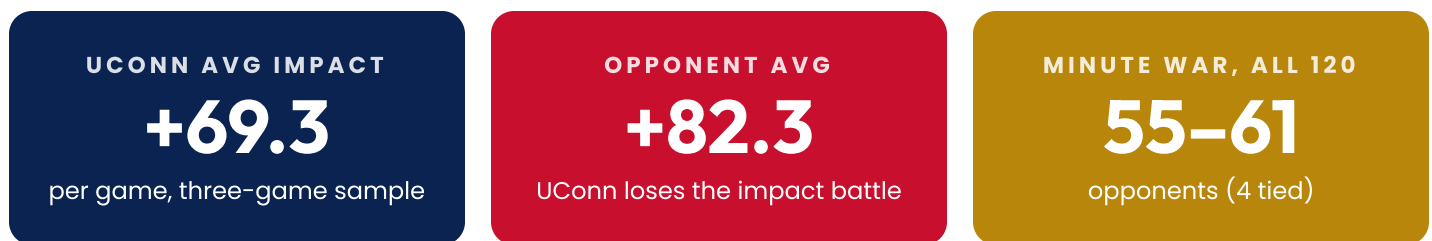
SCOUTING SUMMARY · 1 OF 3 — THE SAMPLE, AT A GLANCE

# Three Games, One Pattern

THE SAMPLE — UCONN'S LAST THREE, EVERY POSSESSION GRADED



THE PATTERN — UCONN'S IMPACT FELL EVERY GAME (navy = UConn, red = opponent)



**The takeaway:** UConn went 2–1 in this sample — but the possessions tell a straight-line story: +99, then +70, then +39. Their impact fell every game while the opposition's pressure rose, and across all 120 minutes they lost the cumulative minute war 55–61. The next three pages tell you why — and what to do about it.

SCOUTING SUMMARY · 2 OF 3

# The Scouting Verdict

The whole report in one page. A coach or scout should understand this team in **60 seconds** — then turn the page for the evidence.

## Take away Reed, and you take away UConn.

He led them in impact all three games — and when his margin shrank, the whole machine slowed with it.

The five reads	Evidence	What it means
<b>Reed is the engine</b>	<b>+53, +31, +24 — led all three</b>	Tarris Reed Jr. led UConn in impact every game; as his margin shrank, the team's shrank with it
<b>The team follows him</b>	<b>+99, +70, +39</b>	Team impact fell in lockstep with Reed's, game over game over game
<b>The fouling crack</b>	<b>20 fouls/game vs 15.3</b>	UConn fouls five more times a night than its opponent — and every foul costs them
<b>The line bleeds</b>	<b>22, 23, 28 opponent FTA</b>	Opponents earned more free throws every game — Michigan cashed 25-of-28 for the title
<b>Karaban rises</b>	<b>+2, +14, +24</b>	The counter-trend: Karaban climbed every game — the second engine warming up

### How UConn beats you

1. Reed wins the interior possession margin — +108 across the run, the sample's best
2. Demary's playmaking when healthy: +24 against Illinois with 7 boards and 7 assists
3. They defend the arc with size — Duke and Illinois both shot below their season mark
4. Karaban's rise: 17 and 11 in the title game, three threes a night in the sample
5. They close: a buzzer-beater win and a 9-point Final Four win say the moment doesn't scare them

### How UConn gets beat

1. When Reed's margin shrinks, nothing replaces it — the Michigan game is the proof
2. Twenty fouls a night puts opponents in the bonus and their own bigs on the bench
3. Demary played the title game on a bad ankle and fouled out — +0 after +24
4. Ball and Mullins graded negative in two of three — the perimeter help is not steady
5. Their impact fell every single game as competition rose — the trend line points down

ONE-SENTENCE VERDICT

**UConn is a one-engine team with a fouling problem — choke Reed's possession margin, attack the rim, and let the bonus do the rest.**

SCOUTING SUMMARY · 3 OF 3 — THE BOTTOM LINE

# The Bottom Line

WHAT THE POSSESSIONS SAY — THE FIVE THINGS THAT DEFINE UCONN RIGHT NOW

FACTOR	EVIDENCE	WHAT IT MEANS
The engine	Reed +108 over three games	Led UConn in impact every night — the offense and the glass run through him.
The trend	Team +99 → +70 → +39	Impact fell every game as the competition rose — the line points down.
The crack	20 fouls a game vs 15.3	Five extra fouls a night: bonus minutes for you, bench minutes for their bigs.
The bleed	Opponent FTA: 22 → 23 → 28	Each opponent earned more trips than the last. Michigan won the title there.
The riser	Karaban +2 → +14 → +24	The second engine is warming up — your gameplan has to account for both.

THE THREE NUMBERS THAT TELL IT

REED, THREE GAMES

**+108**

the engine

FOULS PER GAME

**20**

vs opponents' 15.3 — the crack

IMPACT TREND

↓

+99 → +70 → +39

**Bottom line:** this is still a dangerous, championship-built team — they went 2-1 in this sample and the loss took the eventual champion's best grind. But the possessions don't flatter anybody: one engine carrying the impact, a fouling habit that feeds every opponent's free-throw line, and a trend arrow pointing the wrong way. The pages that follow are the evidence — and pages 16 and 17 are the plan.

**PART 3 · THE DEEP DIVE** **THE EVIDENCE BEHIND THE VERDICT · PAGES 6-17**

**DEEP DIVE · TALE OF THE TAPE — UCONN VS THE AVERAGE OPPONENT, THREE-GAME SAMPLE**

# Tale of the Tape

— per-game averages across the sample

<p><b>UCONN</b></p> <p><b>+69.3</b></p> <p>PBiR per game <b>2-1 on the scoreboard</b></p>	<p><b>AVERAGE OPPONENT</b></p> <p><b>+82.3</b></p> <p>PBiR per game <b>wins the impact battle</b></p>
---	---

**THE AVERAGES, SIDE BY SIDE — GREEN = THE EDGE**

UConn	Metric (per game)	Avg Opponent
+69.3	PBiR Score (avg)	<b>+82.3</b>
<b>23.7-64.7</b>	Field Goals (avg)	<b>21.7-53</b>
<b>8.7-29.7</b>	3-Pointers (avg)	4.7-18.7
13-16.7	Free Throws (avg)	<b>19.7-24.3</b>
<b>37 (15/22)</b>	Rebounds (Off/Def)	39 (11.3/27.7)
<b>13</b>	Assists (avg)	<b>9</b>
<b>6.7</b>	Turnovers (fewer better)	10.3
20	Fouls (fewer better)	<b>15.3</b>

**The Read:** UConn wins the glass and protects the ball better than its opponents — and still loses the impact battle by 13 a game. The two columns that flip it: free throws (opponents live at the line) and fouls (20 a game to 15.3). Those aren't two stats — they're one habit, counted twice.

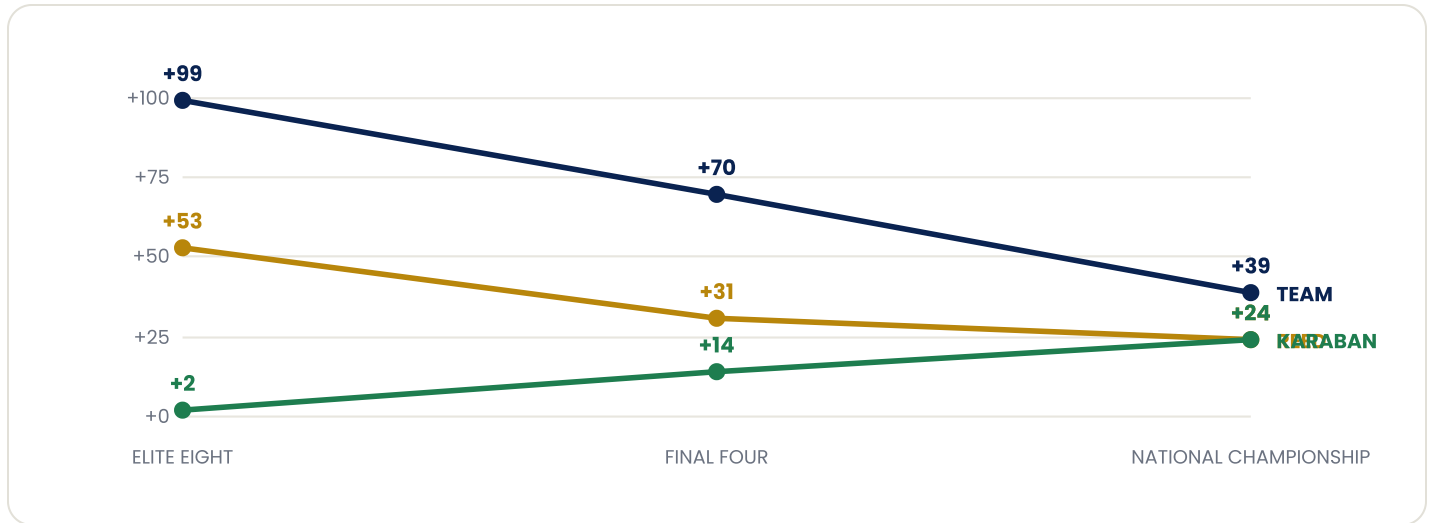
**GAME BY GAME — THE SAMPLE BEHIND THE AVERAGES**

<p><b>ELITE EIGHT</b></p> <p><b>UConn 73-72 W</b></p> <p><b>CONN +99 · opp +99</b></p> <p>fouls 17 · opp FTA 22</p>	<p><b>FINAL FOUR</b></p> <p><b>UConn 71-62 W</b></p> <p><b>CONN +70 · opp +59</b></p> <p>fouls 21 · opp FTA 23</p>	<p><b>NATIONAL CHAMPIONSHIP</b></p> <p><b>UConn 63-69 L</b></p> <p><b>CONN +39 · opp +89</b></p> <p>fouls 22 · opp FTA 28</p>
---	--	---

DEEP DIVE · THE TREND — THE LINE EVERY GAMEPLAN SHOULD START FROM

# The Trend — one engine falling, one rising

PBIR ACROSS THE SAMPLE — TEAM (NAVY), REED (GOLD), KARABAN (GREEN)



**THE TEAM LINE**  
**+99 → +70 → +39**  
 fell every game as competition rose

**REED'S LINE**  
**+53 → +31 → +24**  
 still led every game — with a shrinking margin

**KARABAN'S LINE**  
**+2 → +14 → +24**  
 the counter-trend — rising every game

**The Read:** the navy line and the gold line move together — that's the whole scouting report in one chart. UConn's team impact tracks Reed's possession margin almost step for step: when he posted +53, they posted +99; when Michigan held him to +24, the team managed +39. The green line is the warning for anyone who reads only the first two: Karaban arrived in the title game. A gameplan that sells out on Reed and forgets the riser is a gameplan from two games ago.

DEEP DIVE · UCONN — THREE-GAME IMPACT RANKINGS

# UConn — Who Earned the Floor — three games, totaled

Pure data, ranked — total P*B*iR across all three games, with the game-by-game line under each man. ★ = started at least twice in the sample.

**P*B*iR™ SAMPLE HIGH**

## Tarris Reed Jr. +108

56 pts · 34 reb · 101 min across the run · led UConn in impact in all three games

▲ HIGHEST IMPACT — THE RUN, TOTALED

<p>#1 <b>T. Reed Jr.★</b></p> <p><b>+108</b></p> <p>101 min · 56 pts · 34 reb DUKE +53 · ILL +31 · MICH +24</p>	<p>#2 <b>A. Karaban★</b></p> <p><b>+40</b></p> <p>113 min · 31 pts · 18 reb DUKE +2 · ILL +14 · MICH +24</p>	<p>#3 <b>S. Demary Jr.★</b></p> <p><b>+37</b></p> <p>75 min · 20 pts · 16 reb DUKE +13 · ILL +24 · MICH +0</p>	<p>#4 <b>J. Ross</b></p> <p><b>+23</b></p> <p>60 min · 10 pts · 10 reb DUKE +10 · ILL +9 · MICH +4</p>	<p>#5 <b>M. Smith</b></p> <p><b>+18</b></p> <p>47 min · 15 pts · 4 reb DUKE +8 · ILL +0 · MICH +10</p>
---	--	--	--	--

▼ LOWEST IMPACT

<p>#1 <b>S. Ball★</b></p> <p><b>-11</b></p> <p>74 min · 34 pts · 2 reb DUKE +4 · ILL -3 · MICH -12</p>	<p>#2 <b>B. Mullins★</b></p> <p><b>-4</b></p> <p>92 min · 36 pts · 11 reb DUKE -7 · ILL +6 · MICH -3</p>	<p>#3 <b>J. Stewart</b></p> <p><b>-2</b></p> <p>21 min · 3 pts · 5 reb DUKE +8 · ILL -5 · MICH -5</p>	<p>#4 <b>E. Reibe</b></p> <p><b>-1</b></p> <p>17 min · 2 pts · 2 reb DUKE +8 · ILL -6 · MICH -3</p>
--	--	---	---

Reed's +108 nearly triples the next man — that's what "one engine" looks like in numbers. The names at the bottom matter just as much for a gameplan: Solo Ball graded negative twice (and played the title game hurt), Mullins twice — the perimeter support is the soft floor of this roster. Force UConn's offense away from Reed and toward those names, and the sample says the possessions come back to you.

DEEP DIVE · THE ENGINE ROOM — THE THREE MEN WHO DECIDE UCONN GAMES

# The Engine Room — scout these three first

<b>Tarris Reed Jr.</b>	<b>Alex Karaban</b>	<b>Silas Demary Jr.</b>
<h2>+108</h2>	<h2>+40</h2>	<h2>+37</h2>
DUKE +53 · ILL +31 · MICH +24	DUKE +2 · ILL +14 · MICH +24	DUKE +13 · ILL +24 · MICH +0
<b>56 pts · 34 reb in the sample</b>	<b>31 pts · 18 reb in the sample</b>	<b>20 pts · 16 reb · playmaking hub</b>
The engine. Led UConn in impact all three games. Lives on the interior possession margin: second chances, drawn fouls, rim protection. Michigan's blueprint — a body on him every catch, no clean drop-offs — cut his margin in half from the Duke night. Your interior discipline IS your UConn defense.	The riser. +2 against Duke, +24 in the title game — the trend every scout should respect. Three threes a night, 17 and 11 in the final. The veteran of two championships does not shrink in April. If your plan loads up on Reed, Karaban is where the ball — and the damage — goes next.	The variable. +24 against Illinois on a near triple-impact night (7 boards, 7 assists); +0 in the final playing on a bad ankle, fouled out with 1:07 left. Healthy, he is their connective tissue. In foul trouble, the offense flattens to Reed-or-jumper. Attack him early — the bonus pages show why.

THE SUPPORTING CAST — THE SAMPLE'S READ

Player	Three games	The read
<b>Jayden Ross</b>	<b>+23 (+10 / +9 / +4)</b>	Steady positive in every game — the quiet glue, never the problem
<b>Malachi Smith</b>	<b>+18 (+8 / +0 / +10)</b>	Bench guard punch — his title-game +10 kept them in it
<b>Solo Ball</b>	<b>-11 (+4 / -3 / -12)</b>	Played the final on a foot sprain — volume shooter whose misses are expensive
<b>Braylon Mullins</b>	<b>-4 (-7 / +6 / -3)</b>	The Duke buzzer-beater hero — but the full sample grades him below even

One engine, one riser, one variable — and a supporting cast that holds serve without winning it. That's a team you beat by making the engine ordinary and the variable foul.

DEEP DIVE · THE FOULING CRACK — THE HABIT THAT FEEDS EVERY OPPONENT

# The Fouling Crack — where the armor opens

<p>UCONN FOULS / GAME</p> <p style="font-size: 2em; font-weight: bold; text-align: center;">20</p> <p style="text-align: center;">in the sample</p>	<p>OPPONENT FOULS / GAME</p> <p style="font-size: 2em; font-weight: bold; text-align: center;">15.3</p> <p style="text-align: center;">five fewer, every night</p>	<p>THE TITLE-GAME BILL</p> <p style="font-size: 2em; font-weight: bold; text-align: center;">25-28</p> <p style="text-align: center;">Michigan at the line</p>
---	--	--

THE BLEED, GAME BY GAME — OPPONENT FREE-THROW ATTEMPTS ROSE EVERY NIGHT

<p>ELITE EIGHT</p> <p style="font-size: 2em; font-weight: bold; text-align: center;">22</p> <p style="text-align: center;">opponent FT attempts made 16 · UConn fouls: 17</p>	<p>FINAL FOUR</p> <p style="font-size: 2em; font-weight: bold; text-align: center;">23</p> <p style="text-align: center;">opponent FT attempts made 18 · UConn fouls: 21</p>	<p>NATIONAL CHAMPIONSHIP</p> <p style="font-size: 2em; font-weight: bold; text-align: center;">28</p> <p style="text-align: center;">opponent FT attempts made 25 · UConn fouls: 22</p>
---	--	---

WHAT IT COSTS — THREE BILLS ON ONE HABIT

The cost	The evidence	What it means for your gameplan
<b>Points at the line</b>	<b>59 opponent FT makes in 3 games</b>	Nearly 20 a night handed over before a single shot from the floor
<b>Impact on the PBiR</b>	<b>every foul grades negative</b>	Five extra fouls a night is a built-in deficit in the possession battle
<b>Their bigs on the bench</b>	<b>Demary fouled out of the final; Reed played the Duke game with 4</b>	Attack downhill early — foul trouble removes the engine and the variable for you

**The Read:** this is the most actionable number in the report. UConn's fouling isn't bad luck — it held across all three games against three different styles, and the opponent free-throw line grew every night: 22 attempts, then 23, then 28. Michigan didn't out-shoot UConn to win a championship — it out-drew them. Attack the rim, draw contact, and the crack opens on schedule.

DEEP DIVE · STARTERS VS BENCH — WHERE UCONN'S IMPACT COMES FROM

# Starters vs Bench — the first unit carries it



GAME BY GAME — THE SPLIT



**The Read:** UConn's impact lives almost entirely in the first five — the bench's three-game total of **+38** wouldn't crack the top four of the player rankings on page 8. Two gameplan notes follow directly. First: extend the game's pace and depth — their second unit doesn't win minutes, it survives them. Second: this is why the fouling crack matters double — every starter you put in foul trouble forces minutes onto a bench the possessions grade barely above even. Tempo plus contact equals their five on the bench and your numbers on the floor.

THE EXCEPTION WORTH KNOWING

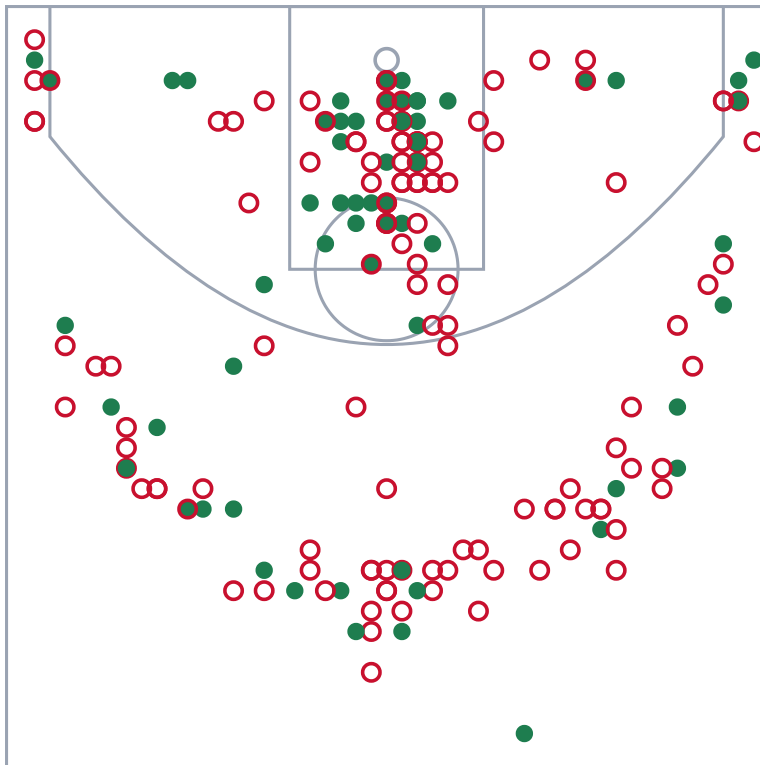
Malachi Smith is the one bench name the sample respects: +18 across the run, including +10 in the title game when the starters were bleeding fouls. When he checks in, the drop-off the averages promise doesn't always come — track him, not the label.

DEEP DIVE · SHOT PROFILE — WHERE UCONN LIVES, ALL THREE GAMES ON ONE COURT

# The Shot Profile — three games, one court

EVERY UCONN ATTEMPT IN THE SAMPLE — ● MADE ○ MISSED · ALL FROM THE OFFICIAL FEEDS

UConn — 71-194 across the sample



INSIDE THE ARC

**45-105**

43% — Reed's territory

BEHIND THE ARC

**26-89**

29% — volume without value

THE PATTERN

Paint pressure through Reed, kick-outs to the arc when it's walled off. The arc is where their possessions go to break even — 89 attempts bought 26 makes.

**The Read:** the green lives at the rim; the empty circles ring the arc. UConn shot 43% inside and 29% outside across the sample — including the 11 straight misses that decided the championship. Wall off the paint without fouling and you turn their offense into the shot they make a third of the time.

Shot locations plotted from official play-by-play coordinates, all three games normalized to one half court. Free throws are not floor shots and are not plotted.

DEEP DIVE · GAME 1 OF 3 — ELITE EIGHT · UCONN 73-72 W

# Elite Eight — vs Duke

— March 29, 2026

## A dead heat the engine refused to call

Capital One Arena, Washington

FINAL

**UConn 73-72 W**

PBiR

**C +99 · DUKE +99**

MINUTE WAR

**20-20**

(0 tied)

TEN MINUTES AT A TIME — UCONN'S WINDOWS

W1 · 1ST TEN

**C +8 · opp +36**

lost it

W2 · 2ND TEN

**C +5 · opp +37**

lost it

W3 · 3RD TEN

**C +35 · opp +22**

UConn won it

W4 · 4TH TEN

**C +47 · opp -2**

UConn won it

THE UCONN LEDGER — THIS GAME, RANKED BY IMPACT (★ = STARTER)

PLAYER	PBiR	MIN	PTS	REB	AST	FG
T. Reed Jr. ★	+53	32	26	9	3	10-16
S. Demary Jr. ★	+13	23	11	5	2	4-9
J. Ross	+10	21	0	3	1	0-0
J. Stewart	+8	5	0	2	2	0-0
E. Reibe	+8	7	2	1	1	1-1
M. Smith	+8	18	9	0	2	4-7
S. Ball ★	+4	30	10	2	2	3-11
A. Karaban ★	+2	38	5	3	3	2-10
B. Mullins ★	-7	26	10	1	0	4-10

The closest thing to a coin flip the engine has graded: +99 to +99 on the PBiR, minute war 20-20, decided by Braylon Mullins' three with 0.4 seconds left. Reed's +53 was a monster night — 20 points' worth of interior dominance — and UConn needed every possession of it.

DEEP DIVE · GAME 2 OF 3 — FINAL FOUR · UCONN 71-62 W

# Final Four — vs Illinois — April 4, 2026

## The healthy blueprint

Lucas Oil Stadium, Indianapolis

**FINAL**  
**UConn 71-62 W**

**PBiR**  
**C +70 · ILL +59**

**MINUTE WAR**  
**19-18**  
(3 tied)

TEN MINUTES AT A TIME — UCONN'S WINDOWS

**W1 · 1ST TEN**  
**C +24 · opp +10**  
UConn won it

**W2 · 2ND TEN**  
**C +16 · opp +19**  
lost it

**W3 · 3RD TEN**  
**C +7 · opp +5**  
UConn won it

**W4 · 4TH TEN**  
**C +23 · opp +25**  
lost it

THE UCONN LEDGER — THIS GAME, RANKED BY IMPACT (★ = STARTER)

PLAYER	PBiR	MIN	PTS	REB	AST	FG
T. Reed Jr. ★	+31	35	17	11	0	6-12
S. Demary Jr. ★	+24	31	7	9	7	2-8
A. Karaban ★	+14	35	9	4	4	1-8
J. Ross	+9	20	7	3	0	2-4
B. Mullins ★	+6	30	15	3	0	5-14
M. Smith	+0	9	0	1	1	0-0
S. Ball ★	-3	28	13	0	2	5-11
J. Stewart	-5	7	3	1	0	1-4
E. Reibe	-6	5	0	1	0	0-1

What UConn looks like at full strength: +70 to +59, the minute war won 19-18, Demary's finest hour (+24 — 7 boards, 7 assists) running the show next to Reed's +31. This is the version of UConn your gameplan must assume is coming.

DEEP DIVE · GAME 3 OF 3 — NATIONAL CHAMPIONSHIP · UCONN 63-69 L

# National Championship — vs Michigan — April 6, 2026

## The blueprint against them

Lucas Oil Stadium, Indianapolis

FINAL

UConn 63-69 L

PBiR

C +39 · MICH +89

MINUTE WAR

16-23

(1 tied)

### TEN MINUTES AT A TIME — UCONN'S WINDOWS

W1 · 1ST TEN

C +11 · opp +17

lost it

W2 · 2ND TEN

C +5 · opp +26

lost it

W3 · 3RD TEN

C +1 · opp +21

lost it

W4 · 4TH TEN

C +22 · opp +25

lost it

### THE UCONN LEDGER — THIS GAME, RANKED BY IMPACT (★ = STARTER)

PLAYER	PBiR	MIN	PTS	REB	AST	FG
A. Karaban ★	+24	40	17	11	2	5-14
T. Reed Jr. ★	+24	34	13	14	0	4-12
M. Smith	+10	20	6	3	3	3-6
J. Ross	+4	19	3	4	0	0-2
S. Demary Jr. ★	+0	21	2	2	2	1-4
B. Mullins ★	-3	36	11	7	2	4-17
E. Reibe	-3	5	0	0	0	0-0
J. Stewart	-5	9	0	2	0	0-3
S. Ball ★	-12	16	11	0	0	4-10

Michigan's championship is the how-to-beat-UConn manual: hold Reed to +24, attack downhill for 28 free-throw attempts, and let the fouling crack pay the bill. UConn's +39 was its lowest impact of the run — in the game that mattered most.

DEEP DIVE · COMMON OPPONENTS — SAMPLE SCENARIO: ST. JOHN'S PREPARING FOR UCONN

# Common Opponents — the shared yardstick

The first question every staff asks: **how did we both do against the teams we both played?** This page answers it with certified possessions — both teams measured by the same engine against the nine Big East programs they shared, most recent meeting each. The scenario is illustrative; every result and every number is real and gate-certified.

THE SEASON SERIES — THEY MET THREE TIMES. NOBODY SETTLED ANYTHING.

<p>FEB 7 · AT UCONN</p> <p><b>SJU 81-72</b></p> <p>SJU PBR +109 · CONN +66</p>	<p>FEB 26 · AT ST. JOHN'S</p> <p><b>CONN 72-40</b></p> <p>SJU PBR +3 · CONN +136</p>	<p>MAR 14 · BIG EAST FINAL</p> <p><b>SJU 72-52</b></p> <p>SJU PBR +100 · CONN +34</p>
--	--	---

NINE SHARED OPPONENTS, SAME ENGINE, SAME YARDSTICK — MOST RECENT MEETING EACH

OPPONENT	UCONN'S MEETING	ST. JOHN'S MEETING	POSSESSION EDGE
<b>Creighton</b>	L 84-91 PBiR margin -13	W 81-52 PBiR margin +132	<b>ST. JOHN'S</b>
<b>Butler</b>	W 80-70 PBiR margin +17	W 92-70 PBiR margin +93	<b>ST. JOHN'S</b>
<b>Villanova</b>	W 73-63 PBiR margin +64	W 89-57 PBiR margin +171	<b>ST. JOHN'S</b>
<b>Providence</b>	W 87-81 PBiR margin +40	W 85-72 PBiR margin +58	<b>ST. JOHN'S</b>
<b>Seton Hall</b>	W 71-67 PBiR margin +4	W 78-68 PBiR margin +54	<b>ST. JOHN'S</b>
<b>Marquette</b>	L 62-68 PBiR margin -4	W 76-70 PBiR margin +24	<b>ST. JOHN'S</b>
<b>Xavier</b>	W 93-68 PBiR margin +98	W 87-82 PBiR margin +66	<b>UCONN</b>
<b>DePaul</b>	W 72-60 PBiR margin +62	W 68-56 PBiR margin +20	<b>UCONN</b>
<b>Georgetown</b>	W 67-51 PBiR margin +55	W 72-69 PBiR margin +42	<b>UCONN</b>

<p>VS THE SHARED NINE</p> <p><b>9-0</b></p> <p>St. John's record</p>	<p>VS THE SHARED NINE</p> <p><b>7-2</b></p> <p>UConn record (Creighton, Marquette)</p>	<p>POSSESSION EDGE</p> <p><b>6-3</b></p> <p>St. John's handled the shared slate better</p>
--	--	--

**The Read:** through the only lens both teams can be measured by, St. John's ran the shared table 9-0 and won the possession battle against 6 of the 9 — while UConn dropped two and split the engine's favor. Add the season series — 2-1 St. John's, each side landing a 20-plus-point haymaker — and the yardstick says this matchup is closer than UConn's tournament run suggests. The pages before this one tell you where to press; this one tells you the press has been working all season.

All 21 games on this page (9 common-opponent meetings per team + 3 head-to-head) passed full PBR certification: box reconcile, points tie, shot profile. Where the public play-by-play under-annotated a stat, the official box (confirmed against a second source) is senior and the correction is credited to the verified player — the same documented standard used throughout this report. **Information only. You make the call.**

## DEEP DIVE · THE SPOKEN SCOUTING SUMMARY

# The Spoken Summary

 — the scouting read in a coach's voice

## THE WHOLE REPORT, OUT LOUD — THE READBACK THAT LANDS IN YOUR INBOX

You're getting ready to play UConn, so here's the truth of their last three games — every possession graded. They beat Duke at the buzzer in a game the engine scored a dead heat, plus ninety-nine apiece. They handled Illinois at full strength, plus 70 to plus 59. And they lost the championship to Michigan, plus 39 to plus 89 — their lowest impact of the run, on the biggest night of it.

The pattern is the scouting report. **Tarris Reed Jr. is the engine** — he led them in impact all three games, +53, +31, +24 — and the team's number fell in lockstep with his. **Karaban is the riser**, +2 to +14 to +24, the second engine warming up. **Demary is the variable** — brilliant healthy against Illinois, fouled out and even in the final.

And the crack: **twenty fouls a game** to their opponents' fifteen, with the opposing free-throw line growing every night — 22 attempts, 23, then 28. Michigan didn't out-shoot them for the title; it out-drew them, 25-of-28 at the stripe.

**The plan writes itself:** a body on Reed every catch, wall the paint without reaching, attack downhill until the bonus comes — and don't forget the riser, because a gameplan that only sees Reed is a gameplan from two games ago.

DEEP DIVE · THE PRESCRIPTION — WHAT THE SAMPLE SAYS TO DO

# The Prescription — five orders, all from the numbers

Nothing here is opinion — every order traces to a number on the pages before it. This is what the possessions prescribe.

THE ORDER	THE EVIDENCE	THE EXECUTION
<b>Body on Reed, every catch</b>	<b>Michigan held him to +24 — half his Duke night</b>	Deny the deep seal, no clean drop-offs, make his touches expensive
<b>Attack downhill early</b>	<b>Opponent FTA grew every game: 22 → 23 → 28</b>	Their fouling habit is your free offense — get to the bonus before the first media timeout of the second half
<b>Hunt the variable</b>	<b>Demary: fouled out of the final, +0</b>	Put him in actions that force him to defend in space — his fouls flatten their offense
<b>Wall the arc traffic</b>	<b>Sample three-point line: volume without value</b>	Make them live behind the arc — that is where their possessions break even
<b>Respect the riser</b>	<b>Karaban +2 → +14 → +24</b>	Your help can come from Ball and Mullins' men — never from Karaban's

CHOKER

**the engine**

Reed's margin is their margin

OPEN

**the crack**

contact until the bonus pays

RESPECT

**the riser**

Karaban is trending, not fading

**The proof it works:** this prescription isn't theory — it's Michigan's championship, reverse-engineered. They executed all five orders and turned the sample's +99 team into a +39 team on the night it counted. The minute-by-minute pages that follow show you exactly when and how.

THE ANTICIPATED READ — ONE PAGE, FORWARD · INFORMATION ONLY

# What the Numbers Anticipate — the sample, read one game

ahead

This page projects **tendencies, not outcomes**. It calls no winner and grades no future — it states what this certified three-game sample anticipates UConn brings to its next game, if the patterns hold. Every line traces to a page in this report.

WHAT TO ANTICIPATE	THE BASIS (this sample)	CONFIDENCE READ
<b>Offense initiated through Reed's interior touches</b>	<b>Led all three games; +108 total; 34 rebounds</b>	Held in 3 of 3 games — the strongest pattern in the sample
<b>A growing share of the load on Karaban</b>	<b>+2 → +14 → +24, rising every game</b>	Directional in 3 of 3 — the trend to plan for, not the history
<b>Twenty-four territory, opponent in the bonus</b>	<b>17, 21, 22 fouls; opponent FTA 22 → 23 → 28</b>	Held in 3 of 3 against three different styles
<b>High three-point volume at break-even value</b>	<b>Arc shooting graded at or below even all sample</b>	Held in 3 of 3 — volume persisted even when cold
<b>A thin bench behind a heavy first five</b>	<b>Bench three-game total far below the top starters</b>	Held in 3 of 3 — Smith the lone consistent exception
<b>Demary's impact tied to health and whistle</b>	<b>+24 healthy → +0 hurt and fouled out</b>	Two data points — the report's least certain read, flagged as such

**How to use this page:** these are anticipations, not declarations. A three-game sample is a pattern, not a guarantee — teams adjust, players heal, and one game can break any line on this table. What the numbers earn is this: if you prepare for the six rows above and UConn shows you something different, you'll know it inside the first ten minutes — because you'll know exactly which pattern just broke.

**Plain-language note:** this page is drawn solely from the certified three-game sample in this report. It is not a prediction of any game's result, a rating of any team's chances, or advice of any kind.  
**Information only. You make the call.**

THE RECORD · ELITE EIGHT · 1ST HALF — MINUTES 1-20 · UCONN 73-72 W

# UConn vs Duke — minute by minute — first half

MIN	TEAM	PBiR	MADE 3	MADE 2	FT	OFF R	DEF R	AST	STL	BLK	DREW	MISS 3	MISS 2	M-FT	TO	FOUL
1	CONN	+5	-	-	2	-	1	-	-	1	1	1	-	-	-	-
	DUKE	-1	-	-	-	-	1	-	-	-	-	-	1	-	-	1
2	CONN	-6	-	-	-	-	-	-	-	-	-	1	-	-	1	-
	DUKE	+9	-	2	-	-	1	-	1	-	-	-	-	-	-	-
3	CONN	+1	-	1	-	-	-	-	-	-	-	-	-	-	-	1
	DUKE	+8	1	-	2	1	-	1	-	-	1	1	-	-	-	-
4	CONN	+4	-	1	-	1	-	-	-	1	-	1	-	-	-	1
	DUKE	+3	1	-	-	1	-	-	-	-	-	-	1	-	-	1
5	CONN	+1	-	1	-	1	-	-	-	-	-	-	-	2	-	-
	DUKE	+10	-	2	-	-	1	2	-	-	-	-	-	-	-	-
6	CONN	+1	-	1	-	-	-	-	-	-	-	-	-	-	-	1
	DUKE	+5	1	-	-	-	-	1	-	-	-	-	-	-	-	-
7	CONN	+5	-	1	-	-	-	-	-	1	-	-	-	-	-	-
	DUKE	+6	1	-	-	2	-	1	-	-	-	1	1	-	-	-
8	CONN	+6	-	2	-	-	-	1	-	-	-	-	-	-	-	-
	DUKE	-3	-	-	-	-	-	-	-	-	-	1	-	-	-	-
9	CONN	-6	-	-	-	-	-	-	-	-	-	2	-	-	-	-
	DUKE	+1	-	1	-	-	1	-	-	-	-	-	-	-	1	-
10	CONN	-3	-	-	-	-	-	-	-	-	-	-	1	-	-	1
	DUKE	-2	-	1	-	-	1	-	-	-	-	1	-	-	1	-
11	CONN	+9	1	1	-	1	-	2	-	-	-	1	-	-	-	-
	DUKE	-3	-	-	-	-	-	-	-	-	-	-	-	-	1	-
12	CONN	-4	-	-	-	-	1	-	-	-	-	1	-	-	1	-
	DUKE	+9	-	2	-	-	-	2	1	-	-	-	1	-	-	-
13	CONN	-6	-	-	-	1	-	-	-	-	-	1	1	-	1	1
	DUKE	+11	-	-	2	-	1	-	1	1	1	-	-	-	-	-
14	CONN	-1	-	-	-	-	1	-	-	1	-	-	2	-	-	2
	DUKE	+9	1	-	1	-	1	1	-	1	1	-	1	1	-	-
15	CONN	-2	-	-	-	1	-	-	-	1	-	-	3	-	-	2
	DUKE	+11	-	-	4	1	2	-	-	-	2	-	1	-	-	-
16	CONN	+6	-	-	2	-	1	-	-	1	1	-	1	-	-	-
	DUKE	-1	-	1	-	-	-	-	-	-	-	-	1	-	-	1
17	CONN	+1	-	1	-	-	-	1	-	-	-	1	-	-	-	-
	DUKE	+4	-	1	-	-	1	-	-	-	-	-	-	-	-	-
18	CONN	-5	-	-	-	-	1	-	-	-	-	1	2	-	-	-
	DUKE	+3	-	-	-	1	1	-	-	2	-	1	1	-	1	-
19	CONN	+3	-	1	-	-	1	-	-	-	-	-	-	-	-	1
	DUKE	+1	-	-	-	-	1	-	-	-	1	-	-	2	-	-
20	CONN	+4	-	1	-	-	-	1	-	-	-	-	-	-	-	-
	DUKE	-7	-	-	-	-	-	-	-	-	-	1	-	-	1	1
<b>1ST-HALF TOTALS</b>																
CONN		+13	1	11	4	5	6	5	0	6	2	10	12	0	3	10
DUKE		+73	5	10	9	6	12	8	3	4	6	6	8	3	5	4

Green = UConn won that minute · Red = lost it · Yellow = tied (PBiR).

THE RECORD · ELITE EIGHT · 2ND HALF — MINUTES 21-40 · UCONN 73-72 W

# UConn vs Duke — minute by minute — second half

MIN	TEAM	PBIR	MADE 3	MADE 2	FT	OFF R	DEF R	AST	STL	BLK	DREW	MISS 3	MISS 2	M-FT	TO	FOUL
21	CONN	+0	-	-	-	-	-	-	-	1	-	1	-	-	-	-
	DUKE	+7	-	1	-	1	1	1	-	-	-	-	1	-	-	-
22	CONN	+0	-	1	-	1	-	-	-	-	-	1	1	-	-	-
	DUKE	-4	-	-	-	-	1	-	-	-	-	-	-	-	1	3
23	CONN	+1	-	1	-	-	-	-	-	-	-	-	-	-	-	1
	DUKE	+6	-	1	2	-	-	1	-	-	1	-	-	-	-	1
24	CONN	+14	-	2	1	-	2	2	-	1	1	1	-	-	-	-
	DUKE	-4	-	-	-	-	1	-	-	-	-	1	1	-	-	1
25	CONN	+0	-	-	-	1	1	-	-	-	-	1	1	-	-	-
	DUKE	+6	-	1	-	-	1	1	-	1	-	1	-	-	-	-
26	CONN	+2	-	-	3	-	-	-	-	-	2	-	-	1	-	2
	DUKE	+1	-	-	1	-	1	-	-	-	1	-	-	1	-	2
27	CONN	+9	-	2	-	-	-	1	1	-	-	-	-	-	-	-
	DUKE	+1	-	1	-	-	-	1	-	-	-	-	-	-	1	-
28	CONN	+5	-	1	-	-	1	1	-	-	-	-	-	-	-	1
	DUKE	+1	-	-	1	-	-	-	-	-	1	-	-	1	-	-
29	CONN	+6	-	1	-	1	1	1	-	-	-	1	-	-	-	-
	DUKE	-2	-	-	-	-	-	-	-	-	-	-	1	-	-	-
30	CONN	-2	-	-	-	1	-	-	-	-	-	-	1	-	1	-
	DUKE	+10	-	1	-	-	-	1	1	1	-	-	-	-	-	-
31	CONN	+5	-	1	-	-	-	-	2	-	-	1	-	-	-	-
	DUKE	-4	-	-	-	-	1	-	-	-	-	-	-	-	2	-
32	CONN	-3	-	-	-	-	-	-	-	-	-	1	-	-	-	-
	DUKE	+4	-	1	-	-	1	-	-	-	-	-	-	-	-	-
33	CONN	+5	-	-	1	1	-	-	1	-	1	-	1	1	-	-
	DUKE	+0	-	1	-	-	1	-	-	-	-	-	-	-	1	1
34	CONN	+10	2	-	-	-	-	2	-	-	-	-	-	-	-	-
	DUKE	+5	1	-	-	-	-	1	-	-	-	-	-	-	-	-
35	CONN	+0	-	-	-	-	1	-	-	-	1	-	-	1	-	2
	DUKE	+2	-	-	2	1	1	-	-	-	1	1	1	-	-	1
36	CONN	+8	-	2	-	-	1	1	-	-	-	-	-	-	-	-
	DUKE	-2	-	-	-	-	-	-	-	-	-	-	1	-	-	-
37	CONN	+7	-	1	1	-	-	-	1	-	1	-	-	-	-	-
	DUKE	-2	-	1	-	-	-	-	-	-	-	-	-	-	1	1
38	CONN	-2	-	-	-	-	1	-	-	-	-	-	2	-	-	-
	DUKE	+0	-	-	-	-	1	-	-	-	-	-	1	-	-	-
39	CONN	+5	-	-	1	1	1	-	1	-	1	1	-	1	-	1
	DUKE	-3	-	-	1	-	-	-	-	-	1	-	-	1	1	1
40	CONN	+12	2	-	1	-	-	1	1	-	1	-	-	1	-	-
	DUKE	-2	-	1	-	-	-	-	-	-	-	-	-	-	1	1
<b>2ND-HALF TOTALS</b>																
CONN		+82	4	12	8	6	9	9	7	2	8	8	6	5	1	7
DUKE		+20	1	9	7	2	10	6	1	2	5	3	6	3	8	12

Documented: five assists in this game are confirmed by the official box (and a second source) but carry no play-by-play timestamp; they are credited to the verified players in all totals and absent from the minute grid above by necessity.

Green = UConn won that minute · Red = lost it · Yellow = tied (PBIR).

THE RECORD · FINAL FOUR · 1ST HALF — MINUTES 1-20 · UCONN 71-62 W

# UConn vs Illinois — minute by minute — first half

MIN	TEAM	PBiR	MADE 3	MADE 2	FT	OFF R	DEF R	AST	STL	BLK	DREW	MISS 3	MISS 2	M-FT	TO	FOUL
1	CONN	-4	-	-	-	-	1	-	-	-	-	2	-	-	-	-
	ILL	+1	-	-	-	-	2	-	-	-	-	1	-	-	-	-
2	CONN	+7	1	-	-	-	1	1	-	-	-	-	-	-	-	-
	ILL	-4	-	-	-	-	-	-	-	-	-	1	-	-	-	1
3	CONN	+3	-	1	-	-	1	-	-	-	-	-	-	-	-	1
	ILL	+1	-	-	2	1	-	-	-	-	1	1	1	-	-	-
4	CONN	+2	1	-	-	-	-	1	-	-	-	-	1	-	-	1
	ILL	+10	-	2	1	-	1	-	-	1	1	-	-	-	-	1
5	CONN	+6	-	1	1	2	1	-	-	-	1	2	-	-	-	-
	ILL	-3	-	-	-	-	-	-	-	-	-	-	1	-	-	1
6	CONN	+3	-	1	-	1	-	-	-	-	-	-	1	-	-	-
	ILL	+2	-	1	-	-	-	-	-	-	-	-	-	-	-	-
7	CONN	+10	1	1	-	-	1	2	-	-	-	-	-	-	-	1
	ILL	-3	-	-	-	-	-	-	-	-	-	1	-	-	-	-
8	CONN	-4	-	-	-	-	-	-	-	-	-	1	-	-	-	1
	ILL	+5	-	1	1	-	1	-	-	-	1	-	-	1	-	-
9	CONN	-2	-	-	-	-	2	-	-	1	-	3	-	-	-	-
	ILL	-4	-	-	-	-	2	-	-	-	-	2	1	-	-	-
10	CONN	+3	1	-	-	-	-	1	-	-	-	-	-	-	-	2
	ILL	+5	1	-	-	-	1	-	-	-	-	-	-	-	-	-
11	CONN	-4	-	-	-	-	-	-	-	-	-	1	-	-	-	1
	ILL	+7	-	1	2	-	1	-	-	-	1	-	-	-	-	-
12	CONN	-2	-	-	-	-	1	-	-	-	-	-	2	-	-	-
	ILL	+1	-	-	-	1	2	-	-	-	-	1	1	-	-	1
13	CONN	+0	-	-	-	1	1	-	-	-	-	1	1	-	-	-
	ILL	+6	1	-	-	-	1	-	-	1	-	-	1	-	-	-
14	CONN	-5	-	-	-	-	-	-	-	-	-	1	1	-	-	-
	ILL	+2	-	-	-	-	1	-	-	1	-	1	-	-	-	-
15	CONN	+1	-	-	-	-	2	-	-	-	-	-	1	-	-	1
	ILL	-2	-	-	-	-	1	-	-	-	1	-	1	2	-	1
16	CONN	+11	-	2	1	-	-	1	1	-	1	-	-	-	-	-
	ILL	-4	-	-	-	-	-	-	-	-	-	-	-	-	1	1
17	CONN	+2	-	1	-	-	-	-	-	-	-	-	-	-	-	-
	ILL	-1	-	1	-	1	-	-	-	-	-	2	-	-	-	-
18	CONN	+12	2	-	-	-	1	2	-	-	-	-	-	-	-	-
	ILL	+4	1	-	-	1	-	1	-	-	-	-	2	-	-	-
19	CONN	-2	-	-	-	-	-	-	-	-	-	-	1	-	-	-
	ILL	-1	-	-	-	1	1	-	-	-	-	1	-	-	1	-
20	CONN	+3	1	-	-	-	-	1	-	-	-	-	1	-	-	-
	ILL	+7	-	1	-	-	1	-	-	1	-	-	-	-	-	-
<b>1ST-HALF TOTALS</b>																
CONN		+40	7	7	2	4	12	9	1	1	2	11	9	0	0	8
ILL		+29	3	7	6	5	15	1	0	4	5	11	8	3	2	6

Green = UConn won that minute · Red = lost it · Yellow = tied (PBiR).

THE RECORD · FINAL FOUR · 2ND HALF — MINUTES 21-40 · UCONN 71-62 W

# UConn vs Illinois — minute by minute — second half

MIN	TEAM	PBiR	MADE 3	MADE 2	FT	OFF R	DEF R	AST	STL	BLK	DREW	MISS 3	MISS 2	M-FT	TO	FOUL
21	CONN	+5	1	-	2	1	-	-	-	-	1	1	-	-	-	1
	ILL	+2	-	-	2	-	-	-	-	-	1	-	-	-	-	1
22	CONN	-3	-	-	-	1	-	-	-	-	-	1	1	-	-	1
	ILL	+4	-	1	-	-	1	-	-	-	-	-	-	-	-	-
23	CONN	+1	-	-	2	-	-	-	1	-	1	1	-	-	-	2
	ILL	+0	1	-	-	-	1	1	-	-	-	-	-	-	2	1
24	CONN	+5	1	-	-	-	1	1	-	-	-	-	1	-	-	-
	ILL	-1	-	-	-	-	1	-	-	-	-	1	-	-	-	-
25	CONN	+2	-	-	-	-	1	-	1	-	-	-	1	-	-	1
	ILL	-4	-	-	-	-	1	-	-	-	-	-	1	-	1	1
26	CONN	+0	-	-	2	1	-	-	-	-	1	2	-	-	-	-
	ILL	+0	-	1	-	-	1	-	-	-	-	-	1	-	-	2
27	CONN	-2	-	-	-	-	1	-	-	-	-	-	-	-	1	1
	ILL	+1	-	-	-	2	-	-	-	-	-	1	1	-	-	-
28	CONN	+1	1	-	-	-	1	-	-	-	-	-	-	-	1	1
	ILL	+6	-	1	2	-	-	-	1	-	1	-	1	-	-	-
29	CONN	-2	-	1	-	-	-	-	-	-	-	-	-	-	1	1
	ILL	-2	-	-	-	-	-	-	-	-	-	-	1	-	-	-
30	CONN	+0	-	-	-	-	2	-	-	-	-	1	-	-	-	1
	ILL	-1	-	-	1	-	1	-	-	-	1	1	-	1	-	1
31	CONN	+5	1	-	-	-	-	1	-	-	-	-	-	-	-	-
	ILL	+2	-	1	-	-	-	-	-	-	-	-	-	-	-	-
32	CONN	-7	-	-	-	-	-	-	-	-	-	1	1	-	-	2
	ILL	+13	-	-	4	-	2	-	-	1	2	-	-	-	-	-
33	CONN	+0	-	-	-	1	1	-	-	-	1	1	1	1	-	-
	ILL	-1	-	-	-	-	1	-	-	-	-	-	1	-	-	1
34	CONN	-1	-	-	-	-	1	-	-	-	-	-	1	-	-	1
	ILL	+8	-	-	2	-	2	-	-	1	1	-	1	-	-	-
35	CONN	-2	-	-	-	-	-	-	1	-	-	1	1	-	-	-
	ILL	+4	-	1	-	2	2	-	-	-	-	1	1	-	1	-
36	CONN	+10	-	2	-	-	1	2	-	-	-	-	-	-	-	-
	ILL	-3	-	-	-	-	-	-	-	-	-	1	-	-	-	-
37	CONN	+0	-	-	-	-	1	-	1	-	-	-	1	-	1	-
	ILL	+5	1	-	-	1	1	1	1	-	-	1	1	-	1	-
38	CONN	+0	-	-	2	-	-	-	-	-	1	-	1	-	-	1
	ILL	+0	-	-	1	-	-	-	-	-	1	-	-	1	-	1
39	CONN	+1	-	-	-	2	-	-	-	-	-	1	1	-	-	-
	ILL	+4	-	1	-	-	1	-	-	-	-	-	-	-	-	-
40	CONN	+17	1	-	5	-	1	1	1	-	3	-	-	1	-	-
	ILL	-7	1	-	-	1	1	-	-	-	-	3	-	-	1	3
<b>2ND-HALF TOTALS</b>																
CONN		+30	5	3	13	6	11	5	5	0	8	10	10	2	4	13
ILL		+30	3	6	12	6	16	2	2	2	7	9	9	2	6	11

Green = UConn won that minute · Red = lost it · Yellow = tied (PBiR).

THE RECORD · NATIONAL CHAMPIONSHIP · 1ST HALF — MINUTES 1-20 · UCONN 63-69 L

# UConn vs Michigan — minute by minute — first half

MIN	TEAM	PBiR	MADE 3	MADE 2	FT	OFF R	DEF R	AST	STL	BLK	DREW	MISS 3	MISS 2	M-FT	TO	FOUL
1	CONN	-2	-	-	-	-	-	-	-	-	-	-	1	-	-	-
	MICH	-2	-	-	-	-	1	-	-	-	-	-	2	-	-	-
2	CONN	-1	-	-	-	-	1	-	-	-	-	1	-	-	-	-
	MICH	+6	-	1	-	-	1	1	-	-	-	-	-	-	-	-
3	CONN	+0	-	1	-	-	-	-	-	-	-	-	1	-	-	-
	MICH	+4	-	1	-	-	1	-	-	-	-	-	-	-	-	-
4	CONN	+0	-	1	-	-	-	-	-	-	-	-	-	-	-	2
	MICH	+7	-	1	3	2	-	-	-	-	1	1	1	-	-	-
5	CONN	+0	-	-	-	-	1	-	-	-	-	-	1	-	-	-
	MICH	+1	-	-	-	-	-	-	-	1	-	-	1	-	-	-
6	CONN	+2	1	-	-	1	1	-	-	-	-	1	-	-	1	-
	MICH	-1	-	-	-	-	-	-	1	-	-	1	-	-	-	1
7	CONN	-2	-	-	-	-	1	-	-	-	-	-	1	-	-	2
	MICH	+4	-	1	-	-	1	-	-	-	1	-	-	1	-	-
8	CONN	+4	1	-	-	-	1	-	-	-	-	-	-	-	-	1
	MICH	-5	-	-	-	-	-	-	-	-	-	1	1	-	-	-
9	CONN	+5	-	1	1	-	1	-	-	-	1	-	-	1	-	-
	MICH	+3	-	1	-	-	1	-	-	-	-	-	-	-	-	1
10	CONN	+5	1	-	-	1	-	1	-	-	-	1	-	-	-	-
	MICH	+0	-	1	-	1	-	-	-	-	-	-	1	-	1	-
11	CONN	+1	-	1	-	-	1	-	-	-	-	-	-	-	1	-
	MICH	+0	-	-	-	-	-	-	1	-	-	1	-	-	-	-
12	CONN	-2	-	-	-	-	1	1	-	-	-	2	-	-	-	1
	MICH	-7	-	-	-	-	1	-	-	-	-	1	1	-	1	1
13	CONN	-1	-	-	-	-	1	-	-	-	-	-	2	-	-	-
	MICH	+9	-	1	-	-	1	1	-	1	-	-	-	-	-	-
14	CONN	+4	1	-	2	-	-	1	-	-	1	-	1	-	-	2
	MICH	+7	-	-	4	-	1	-	-	-	2	-	-	-	-	1
15	CONN	+0	-	-	-	1	1	-	-	-	-	1	1	-	-	-
	MICH	-4	-	-	-	-	1	-	-	-	-	2	-	-	-	-
16	CONN	+6	-	1	-	1	1	1	-	-	-	-	1	-	-	1
	MICH	+4	-	-	2	1	-	-	-	-	1	-	1	-	-	-
17	CONN	-3	-	-	-	-	1	-	-	1	-	1	-	-	1	2
	MICH	+7	-	1	2	1	1	1	-	-	1	1	1	-	-	-
18	CONN	+2	1	-	-	-	-	1	-	-	-	1	-	-	-	-
	MICH	+4	-	1	-	-	1	-	-	-	-	-	-	-	-	-
19	CONN	-3	-	-	-	-	1	-	-	-	-	2	-	-	-	-
	MICH	+2	-	1	-	-	1	-	-	-	-	-	1	-	-	-
20	CONN	+1	-	-	1	-	1	-	-	-	1	-	1	1	-	-
	MICH	+4	-	1	-	1	1	-	-	-	-	-	1	-	-	1
<b>1ST-HALF TOTALS</b>																
CONN		+16	5	5	4	7	12	4	0	1	3	10	10	2	3	11
MICH		+43	0	11	11	6	13	3	2	2	6	8	11	1	2	5

Green = UConn won that minute · Red = lost it · Yellow = tied (PBiR).

THE RECORD · NATIONAL CHAMPIONSHIP · 2ND HALF — MINUTES 21-40 · UCONN 63-69 L

# UConn vs Michigan — minute by minute — second half

MIN	TEAM	PBIR	MADE 3	MADE 2	FT	OFF R	DEF R	AST	STL	BLK	DREW	MISS 3	MISS 2	M-FT	TO	FOUL
21	CONN	-1	-	1	-	1	-	-	-	-	-	1	1	-	-	1
	MICH	+5	-	-	2	-	1	-	-	-	1	-	-	-	-	-
22	CONN	-1	-	-	-	-	1	-	-	-	-	-	-	-	1	-
	MICH	-6	-	-	-	-	-	-	-	-	-	1	-	-	1	-
23	CONN	-5	-	-	-	-	1	-	1	-	-	1	-	-	2	1
	MICH	+3	-	-	-	-	1	-	2	-	-	-	1	-	1	-
24	CONN	-4	-	-	-	-	-	-	-	-	-	1	-	-	-	1
	MICH	+2	-	1	1	-	1	-	-	-	1	-	-	-	1	1
25	CONN	-2	-	1	-	2	1	-	-	-	-	1	1	-	2	1
	MICH	+9	-	1	1	1	-	-	1	1	1	-	2	-	-	-
26	CONN	+6	-	1	-	-	1	1	-	-	-	-	-	-	-	-
	MICH	-1	-	1	-	-	-	-	-	-	-	1	-	-	-	-
27	CONN	+1	-	1	-	2	-	-	-	-	-	1	2	-	-	-
	MICH	+4	-	1	-	-	1	-	-	-	-	-	-	-	-	-
28	CONN	+3	-	-	2	1	-	-	-	-	1	1	-	-	-	-
	MICH	+4	1	-	-	-	-	1	-	-	-	-	-	-	-	1
29	CONN	+6	-	1	-	-	3	-	-	1	-	1	1	-	-	-
	MICH	-1	-	-	-	-	1	-	-	1	-	-	3	-	-	-
30	CONN	-2	-	-	-	1	1	-	-	-	-	1	2	-	-	-
	MICH	+2	-	-	-	-	2	-	-	1	-	1	1	-	-	-
31	CONN	+4	-	1	-	1	-	-	1	-	-	-	2	-	-	-
	MICH	+6	-	1	-	2	1	-	-	1	-	1	-	-	1	1
32	CONN	+4	-	1	-	-	1	-	-	-	-	-	-	-	-	-
	MICH	-5	-	-	-	-	-	-	-	-	-	1	1	-	-	-
33	CONN	-6	-	-	-	-	-	-	-	-	-	1	-	-	1	-
	MICH	+4	-	1	-	-	-	1	1	-	-	-	-	-	1	-
34	CONN	-1	-	-	-	2	-	-	-	-	1	1	1	2	-	1
	MICH	+3	-	-	2	-	1	-	-	-	1	-	-	-	-	2
35	CONN	+2	1	-	-	-	-	1	-	-	-	1	-	-	-	-
	MICH	+9	-	2	-	1	1	1	-	-	-	-	1	-	-	-
36	CONN	+4	1	-	-	-	-	1	-	-	-	-	-	-	-	1
	MICH	+3	-	-	2	-	-	-	-	-	1	-	-	-	-	-
37	CONN	+1	-	-	2	-	1	-	-	-	1	-	-	-	1	1
	MICH	-3	-	-	-	-	-	-	-	-	-	-	1	-	-	1
38	CONN	+5	1	-	-	-	-	1	1	-	-	-	1	-	-	1
	MICH	+0	-	-	2	-	-	-	-	-	1	-	-	-	1	-
39	CONN	+3	-	-	2	2	-	-	-	-	1	1	1	-	-	1
	MICH	+9	1	-	2	-	1	1	-	-	1	-	-	-	-	1
40	CONN	+6	1	-	2	1	1	1	1	-	1	2	1	-	-	2
	MICH	-1	-	-	2	-	2	-	-	-	2	-	-	-	2	1
<b>2ND-HALF TOTALS</b>																
CONN		+23	4	7	8	13	11	5	4	1	5	14	13	2	7	11
MICH		+46	2	8	14	4	13	4	4	4	9	5	10	2	8	8

Green = UConn won that minute · Red = lost it · Yellow = tied (PBIR).

THE CLOSING PAGE · THE RUN IN REVIEW — EVERYTHING RECONCILED

# The Run in Review — the sample, certified and closed

Every number in this report comes from the three games below — box-reconciled with zero mismatches, shot profiles tied to the official box, gaps documented in the open. This page closes the ledger.

GAME	FINAL	PBiR	MINUTE WAR	GATES (BOX / SHOTS)
Elite Eight	UConn 73–72 W	CONN +99 · opp +99	20–20 (0 tied)	PASS / PASS
Final Four	UConn 71–62 W	CONN +70 · opp +59	19–18 (3 tied)	PASS / PASS
National Championship	UConn 63–69 L	CONN +39 · opp +89	16–23 (1 tied)	PASS / PASS

THE SAMPLE, BY THE NUMBERS

**120**  
minutes graded

**+108**  
Reed — the sample high

**20**  
UConn fouls per game

**2-1**  
with a falling trend line

**Why this report exists:** the highlight reel says UConn is a buzzer-beater and a Final Four cruise. The possessions say it's one engine with a shrinking margin, a riser nobody's scouting yet, and a fouling habit that paid for Michigan's championship. One of those stories prepares you for the next game. That's the difference between watching what happened and understanding what it meant.

Built entirely from official box scores and play-by-play, all three games, two sources. The Anticipated page projects tendencies only — information only; you make the call. Not affiliated with or endorsed by the NCAA or any school.